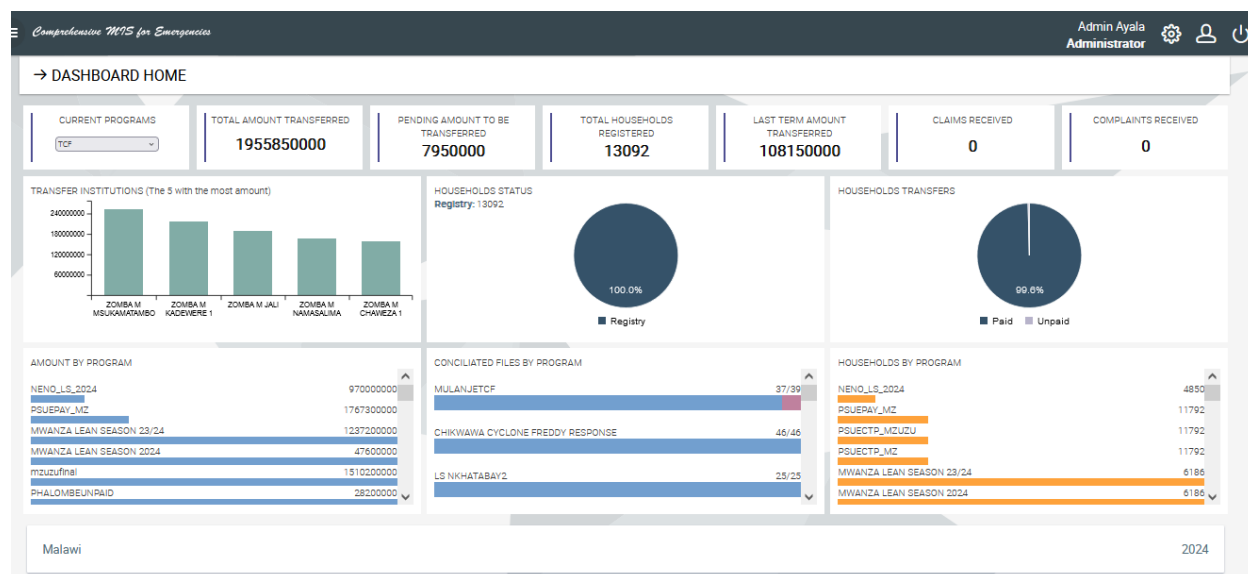


## SPECTACULAR RESULTS OF SOPROEN'S PLATFORM



### Social Interventions Management System (SIMS) Version 1.0 IN MALAWI: A Key Tool in Emergency Response

Since 2020, when SIMS began being utilized by the Ministry of Gender, Community Development & Social Welfare (MoGCDSW) of the Malawi government as a key instrument in emergency response interventions, it has supported 8 interventions (programs) with 27 localized emergency projects, averaging about 10 per year. This version has been operational for three years, addressing various emergency response interventions (refer to the table). Moreover, the MoGCDSW has employed this platform for other cash transfer interventions, not necessarily of an emergency nature. As a result, this tool enables a faster, more transparent, secure, and efficient implementation of emergency response interventions. It is important to highlight that each project managed by SIMS was configured with its own design parameters and project cycles. Ministry officials took only a few hours to configure the platform and its peripherals (data collection instruments) to begin the implementation of the project with specific characteristics. The table below summarizes the outcomes of these interventions. Malawi is now equipped to respond to and manage cash transfer emergency interventions as natural disasters and covariate emergencies happen.

Intervention	Projects managed by SIMS	Total paid beneficiaries	Total transferred in US Dollars
Rural Lean Season Response	4	16,083	335,813.04
Rural lean Season Response for remaining households	3	1,171	24,450.48

Floods Recovery Response	4	12,127	379,817.64
Lean Season for Nkhata Bay	2	3,759	109,011.00
Urban Lean Season Response	1	44,106	1,279,074.00
Tropical Cyclone Freddy (TCF) Early Recovery Response	9	72,705	6,325,335.00
CCT	2	55,870	4,860,690.00
Lean Season 2023 - 2024	2	11,036	1,280,176.00
<b>TOTAL</b>	<b>27</b>	<b>216,857</b>	<b>14,594,367.16</b>

**Now, SOPROEN Introduces the Highly Flexible New SIMS, version 2.0**

In 2024, SOPROEN released the new Version 2.0, distinguished by its high flexibility and significant enhancements. The platform has been expanded with innovative functionalities and modules, including ranking and community validation. This attribute of high flexibility allows for the design of multiple projects and their implementation in any geographical area, each tailored according to its specific conditions and design parameters.